

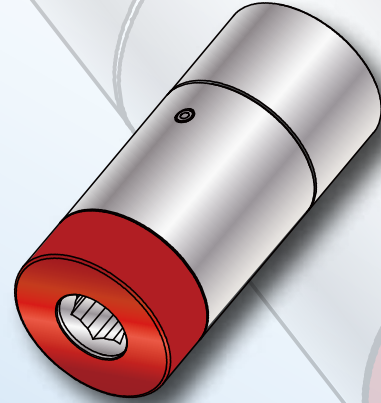
EXTEND

TORQUE ADAPTER

6 ~ 18 Nm

CUSTOMDesign

SLOKY®

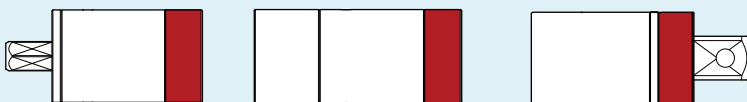


EX: Connecting Part	Torque Adapter	EX: Driving Part
<p>1/4" Hex Drive</p> <p>Ratchet T-handle Handle</p>	<p>0-TPK-ETA</p> <p>1/4" Hex 1/4" Hex</p>	<p>Torx bits Torx Plus bits</p> <p>Hex bits Flat head bits</p> <p>PH bits long bits</p>
<p>1/4" Square Drive</p> <p>Sliding T-handle Ratchet Handle</p>	<p>0-TPK-ETB</p> <p>1/4" Square 1/4" Hex</p>	<p>Square Socket Socket Bit_P2</p> <p>Socket Bit_Hex</p>
<p>3/8" Square Drive</p> <p>T-handle Handle Ratchet</p>	<p>0-TPK-ETC</p> <p>3/8" Square 3/8" Square</p>	

How to order:

1. Identify which type of torque adapter you need

- 0-TPK-ETA
 0-TPK-ETB
 0-TPK-ETC



2. Determine the torque range from 6Nm to 18Nm

- 0-TPK-ETA- _____ Nm
 0-TPK-ETB- _____ Nm
 0-TPK-ETC- _____ Nm

* Delivery time : around 8~12 weeks

* MOQ : 30 pcs

28707

□H□H
□215

7□

□
□

□□H
□152

7□

H□□
□□□